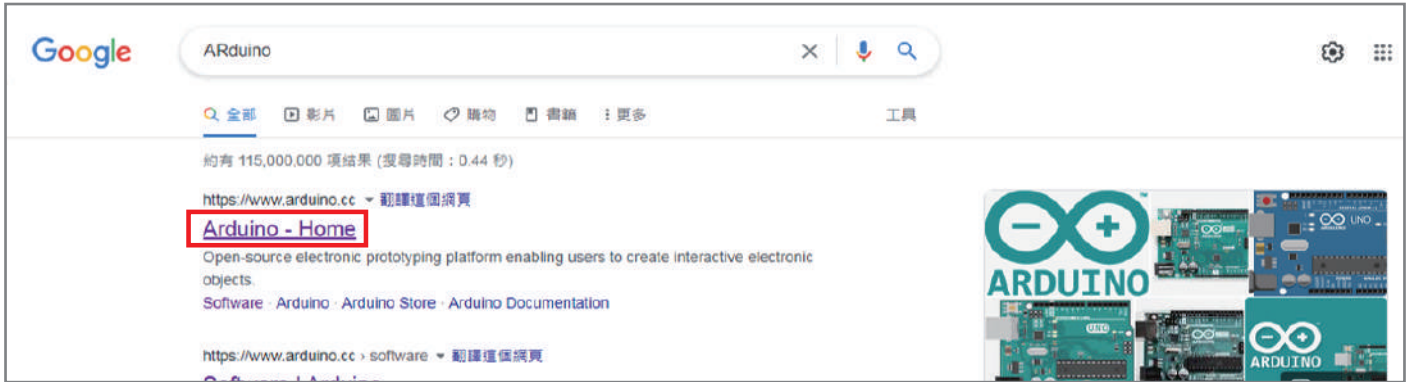


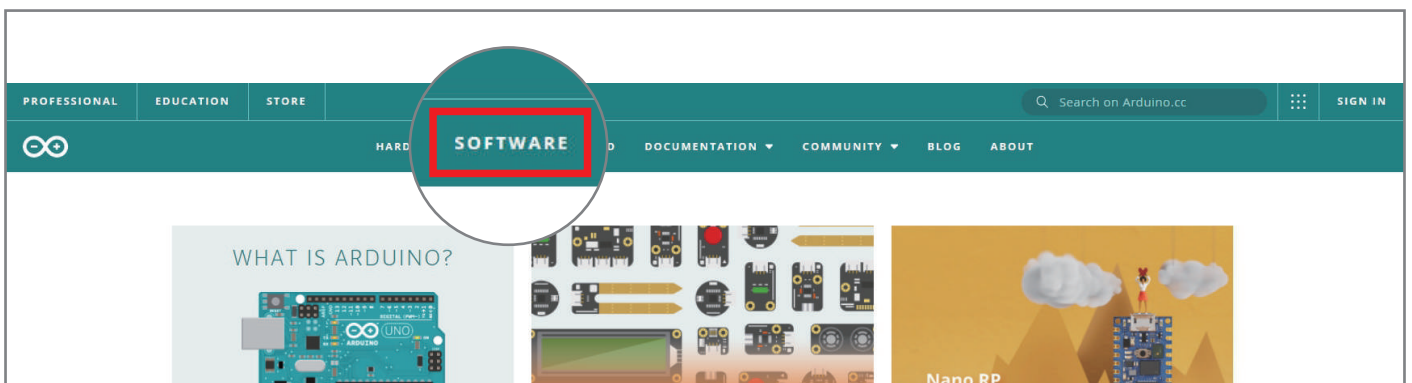
# 程式操作如下頁指示開始操作

## 一.下載ARduino 軟體

### 1-1.請點選ARduino-HOME



### 1-2.請點選SOFTWARE

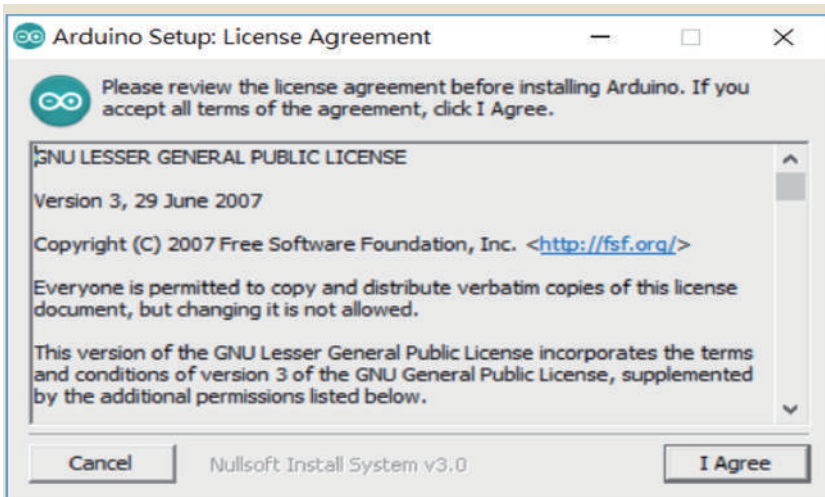


### 1-3.至紅圈處點選您的電腦系統下載



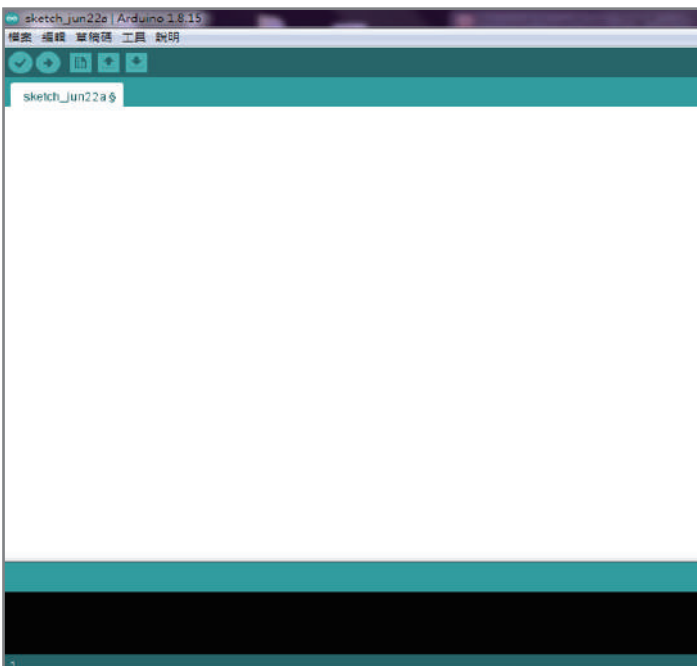
### 1-4.點選JUST DOWNLOAD





安裝過程很簡單，一直按 Next 就可以了。請注意！如果有問你要不要安裝驅動程式，一定要回答「Yes」哦！

## 二.開啟ARduino軟體



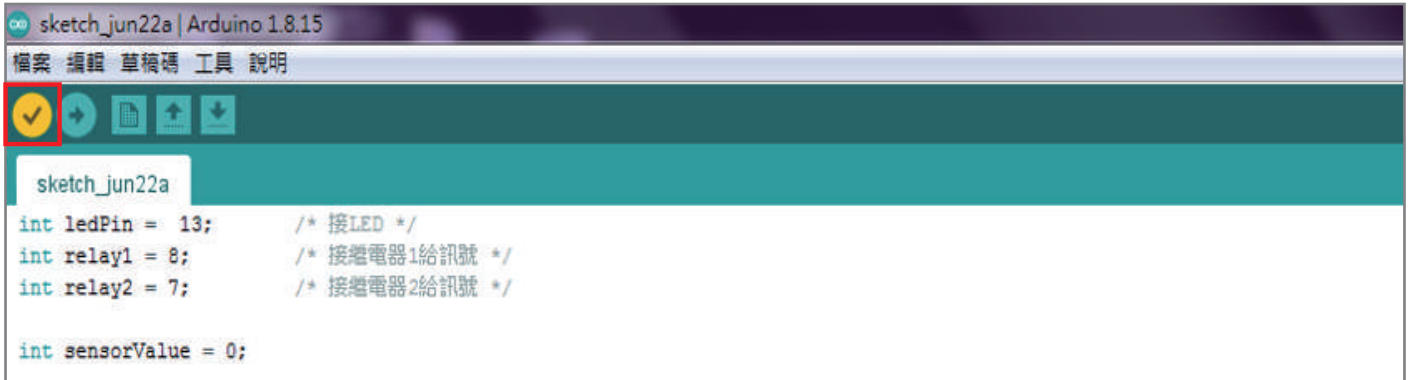
## 三.複製程式碼並貼上



### 程式碼

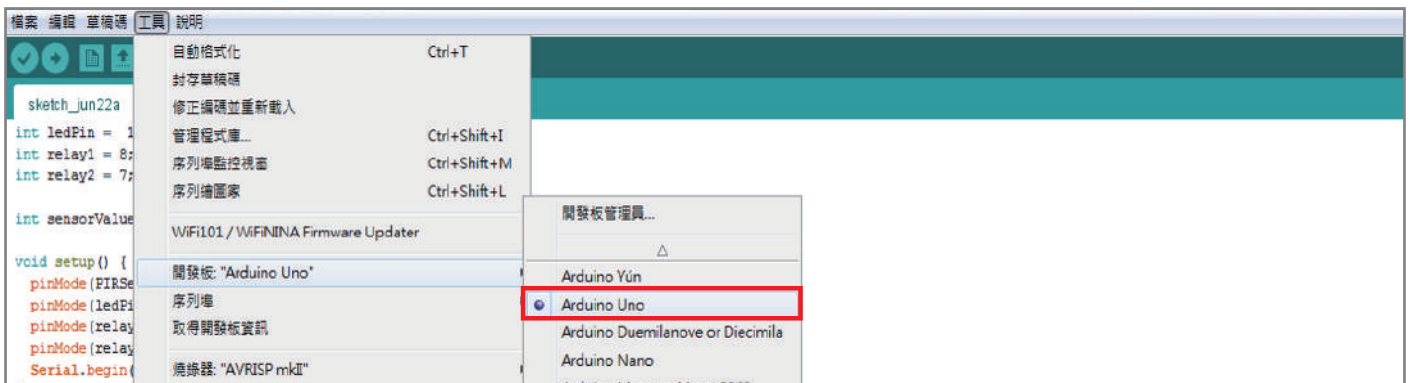
- /\*
- PIR("Passive Infrared Sensor") Motion Sensor,
- 人體紅外線感應器
- \*/
- int PIRSensor = 2; /\* PIR INPUT \*/
- int ledPin = 13; /\* 接LED \*/
- int relay1 = 8; /\* 接繼電器1給訊號 \*/
- int relay2 = 7; /\* 接繼電器2給訊號 \*/
- int sensorValue = 0;
- void setup() {
- pinMode(PIRSensor, INPUT);
- pinMode(ledPin, OUTPUT);
- pinMode(relay1, OUTPUT);
- pinMode(relay2, OUTPUT);
- Serial.begin(9600); /\* 鮑率 \*/
- }
- void loop(){
- sensorValue = digitalRead(PIRSensor);
- Serial.println(sensorValue);
- 
- if (sensorValue == HIGH) {
- digitalWrite(ledPin, HIGH);
- digitalWrite(relay1, HIGH);
- digitalWrite(relay2, HIGH);
- }
- else {
- digitalWrite(ledPin, LOW);
- digitalWrite(relay1, LOW);
- digitalWrite(relay2, LOW);
- }
- }

#### 四.貼上程式碼後請按” 驗證”

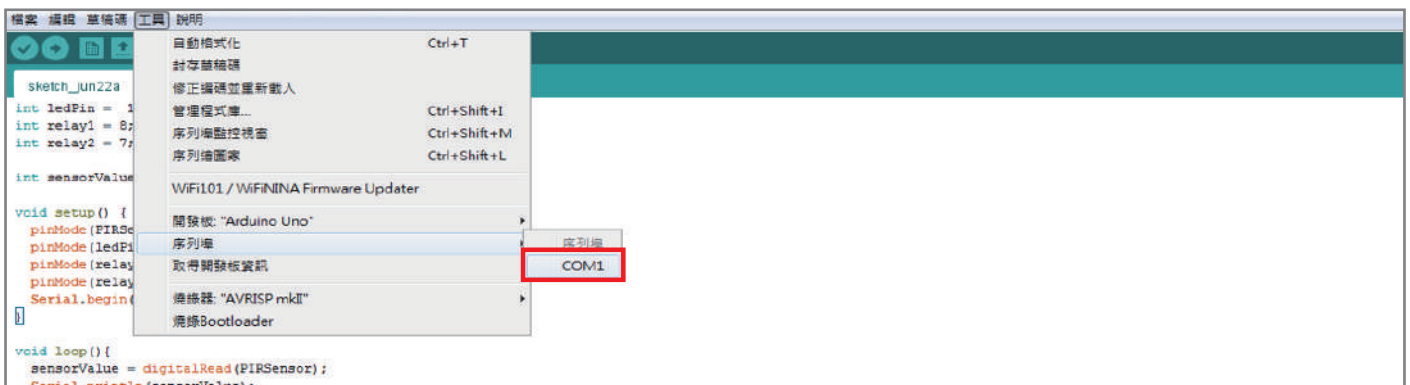


#### 五.確認開發版與序列埠是否正確

##### 5-1.工具>開發版> ARduino UNO



##### 5-2.工具>序列埠> 選擇您板子上的序列埠



#### 六.燒錄程式

選擇上傳後即自動燒錄程式

